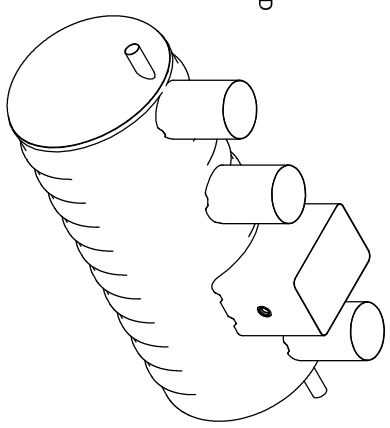
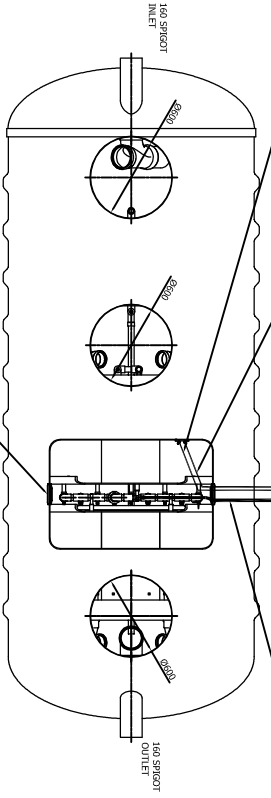


10mm PNUMATIC PIPE FROM VALVE  
2 TO HUMUS RETURN AIR LIFT  
CONNECTOR WITHIN 100MM DUCT

10mm PNUMATIC PIPE FROM  
VALVE 1 TO FORWARD FEED  
AIR LIFT WITHIN 100MM DUCT

POWER SUPPLY 1PH  
TO CONTROL PANEL

2" HOSE FROM KIOSK  
BRASS HOSETAIL  
TO BIOZONE MANIFOLD  
WITHIN 100MM DUCT

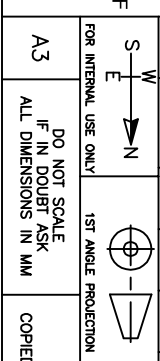


Vent connections are provided on the SAF tank turrets, to allow connection to the site's venting system. The design of the venting system will vary from site to site and is the responsibility of the installation contractor.

1	15/03/10	RP	RU	RP	ISSUED FOR INFO				
REV.	DATE	BY	CHKD.	APPD.	DESCRIPTION				
<p><b>GENERAL TOLERANCES</b> (unless noted otherwise)</p> <table border="1"> <tr> <td>GRP FABRICATED MACHINED</td> <td>LINEAR ± 5mm ± 2mm</td> <td>ANGLE ± 0.5mm</td> <td>± 0.5° ± 0.2° ± 0.1°</td> </tr> </table>						GRP FABRICATED MACHINED	LINEAR ± 5mm ± 2mm	ANGLE ± 0.5mm	± 0.5° ± 0.2° ± 0.1°
GRP FABRICATED MACHINED	LINEAR ± 5mm ± 2mm	ANGLE ± 0.5mm	± 0.5° ± 0.2° ± 0.1°						
<p><b>IMPORTANT INVERT LEVEL NOTE (RIBBED TANKS ONLY):</b> The inlet and outlet invert levels shown on this drawing is to internals of the shell unless otherwise stated. For invert level to the outside of the shell ribs, see the conversion below: Ø3.0m, 4.0m IL+150mm (X1) Ø3.0m, 4.0m IL+150mm (X1)</p>									
<p><b>TANKS SUPPLIED WITH LOOSE SHAFTS DO NOT COME SUPPLIED WITH A FIXING KIT. THIS IS THE RESPONSIBILITY OF THE SITE CONTRACTOR.</b></p>									

**conder**  
ENVIRONMENTAL SOLUTIONS

TITLE					
NSAF30 SCHEME SHOWING TYPICAL KIOSK CONNECTIONS					
DRAWN BY	CHKD.	RU	APPD.	RP	SCALE
RP	RU	RU	RP	RP	NTS
DATE	DATE	DATE	DATE	DATE	DRAWING No.
15/03/10	15/03/10	15/03/10	15/03/10	15/03/10	NSAF30 LAYOUT
REVISION					1



DO NOT SCALE  
IF IN DOUBT ASK  
ALL DIMENSIONS IN MM

THIS DRAWING IS THE PROPERTY OF  
CONDER SOLUTIONS LTD. AND IS NOT TO BE  
COPIED IN PART OR WHOLE WITHOUT WRITTEN PERMISSION