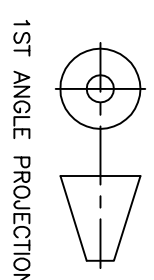
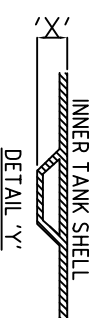


IMPORTANT INVERT LEVEL NOTE (RIBBED TANKS ONLY):
 The inlet and outlet Invert Level(IL) shown on this drawing is to internals of the shell unless otherwise stated.
 For Invert level to the outside of the shell ribs, see the conversion below:
 Ø1.0m, 1.2m, 1.5m, 1.8m, 2.5m IL+50mm ('X')
 Ø3.0m, 4.0m IL+75mm ('X')

TANKS SUPPLIED WITH LOOSE SHAFTS DO NOT COME SUPPLIED WITH A FIXING KIT.
 THIS IS THE RESPONSIBILITY OF THE SITE CONTRACTOR.



REV.	DATE	BY	CHKD.	PB	RP	ISSUED FOR INFORMATION	DESCRIPTION
1	23.03.09	RU	PB	RP	RP	ISSUED FOR INFORMATION	GENERAL TOLERANCES (unless noted otherwise) GRP FABRICATED ± 5mm LINEAR ± 2mm ANGLE ± 0.5° ± 0.2° ± 0.1°
A3	DO NOT SCALE IF IN DOUBT ASK ALL DIMENSIONS IN MM		THIS DRAWING IS THE PROPERTY OF CONDER SOLUTIONS Ltd. AND IS NOT TO BE COPIED IN PART OR WHOLE WITHOUT PERMISSION				

DATE	DATE	DATE	SCALE	DRAWING No.	REVISION
23.03.09	23.03.09	23.03.09	NTS	ASP20 SALES	1

TITLE
 ASP20
 SEWAGE TREATMENT PLANT