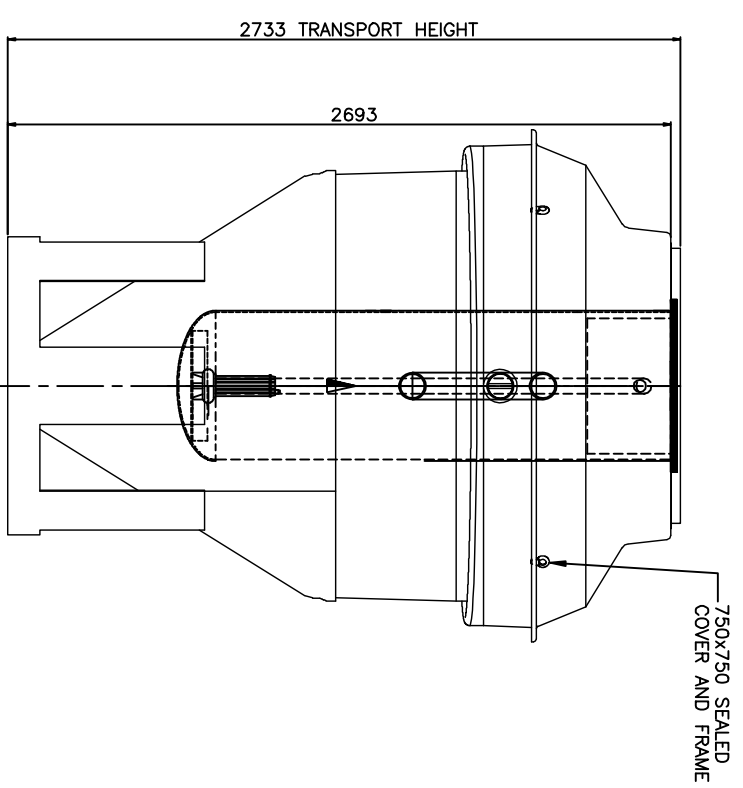
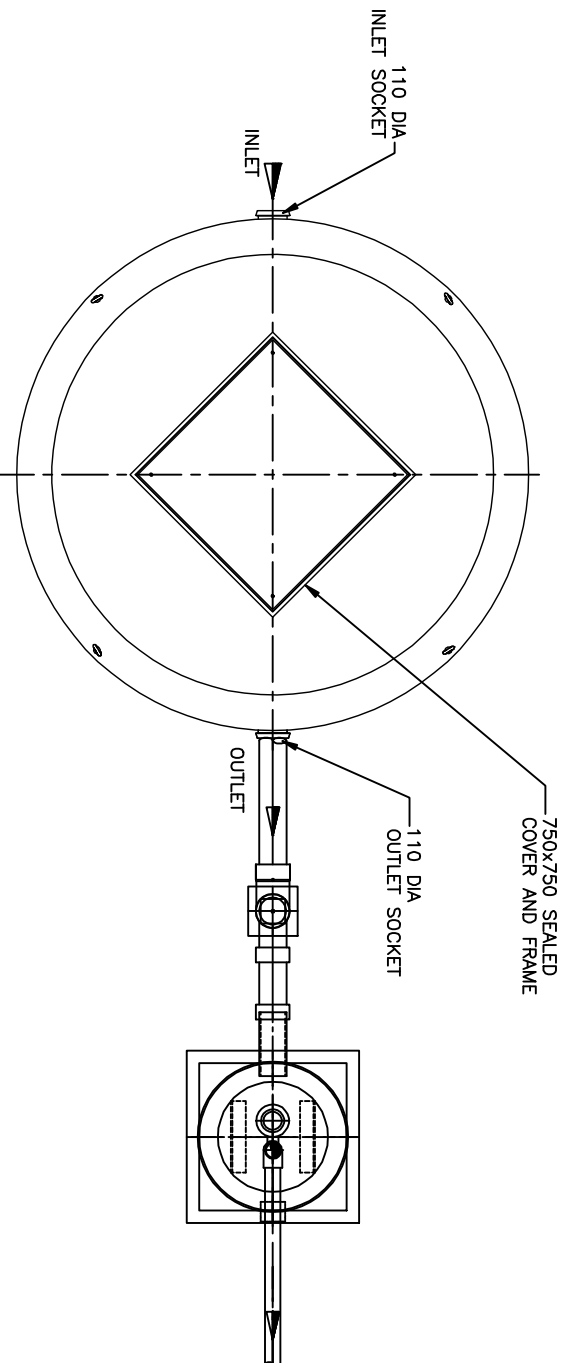


ELEVATION
ASP16 & PUMP SUMP



END VIEW
ASP16 & PUMP SUMP



PLAN
ASP16 & PUMP SUMP

REV.	DATE	BY	CHKD.	RP	ISSUED FOR INFORMATION	DESCRIPTION
1	23.03.09	SL	TB	RP	ISSUED FOR INFORMATION	THIS DRAWING IS THE PROPERTY OF CONDER SOLUTIONS Ltd. AND IS NOT TO BE COPIED IN PART OR WHOLE WITHOUT WRITTEN PERMISSION
A3	DO NOT SCALE IF IN DOUBT ASK ALL DIMENSIONS IN MM		GENERAL TOLERANCES (unless noted otherwise)	GRP FABRICATED MACHINED	LINEAR	± 5mm ± 2mm ± 0.5mm
			ANGLE			± 0.5° ± 0.2° ± 0.1°

IMPORTANT INVERT LEVEL NOTE
The inlet to ASP shown on this drawing is dependant on the invert level of raw sewage coming from the dwelling unless otherwise stated. Therefore the Ground Level is SITE SPECIFIC shown GL @ 0.000m on drawing. Additional extension pieces or risers may be required at extra cost.

IMPORTANT INVERT LEVEL NOTE (RIBBED TANKS ONLY):
The inlet and outlet Invert Level(IL) shown on this drawing is to internals of the shell unless otherwise stated. For Invert level to the outside of the shell ribs, see the conversion below:
Ø1.0m, 1.2m, 1.5m, 1.8m, 2.5m IL+50mm ('X')
Ø3.0m, 4.0m IL +75mm ('X')

TANKS SUPPLIED WITH LOOSE SHAFTS DO NOT COME SUPPLIED WITH A FIXING KIT.
THIS IS THE RESPONSIBILITY OF THE SITE CONTRACTOR.

conder
ENVIRONMENTAL SOLUTIONS

conder
ENVIRONMENTAL SOLUTIONS

TITLE
ASP16 SEWAGE TREATMENT PLANT WITH PUMP SUMP

DRAWN BY SL
DATE 04.08.09

CHKD. TB
DATE 04.08.09

APPD. RP
DATE 23.03.09

SCALE NTS
DRAWING No. ASP16 SALES

REVISION 1

1ST ANGLE PROJECTION

INNER TANK SHELL
DETAIL 'X'